

# Two Octave Arpeggios

*Major, Augmented, Minor, Diminished*

Steph Dressler

C Major

C Augmented



c minor

c diminished



C# Major

C# Augmented



c# minor

c# diminished



D Major

D Augmented



d minor

d diminished



E $\flat$  Major

E $\flat$  Augmented



e $\flat$  minor

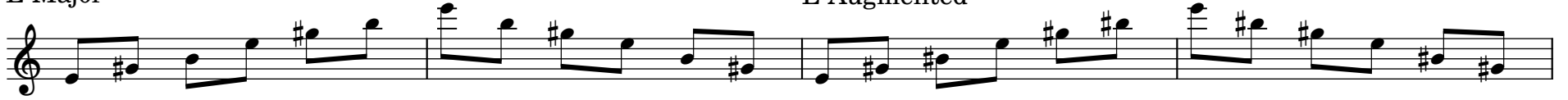
e $\flat$  diminished



(A $\sharp$ )

E Major

E Augmented



e minor

e diminished



F Major

F Augmented



f minor

f diminished



F# Major

Musical notation for F# Major and F# Augmented scales. The F# Major scale is shown in the first two measures, and the F# Augmented scale is shown in the next two measures. The augmented scale includes a tritone (D natural) marked with an 'x'.

f# minor

Musical notation for f# minor and f# diminished scales. The f# minor scale is shown in the first two measures, and the f# diminished scale is shown in the next two measures.

G Major

Musical notation for G Major and G Augmented scales. The G Major scale is shown in the first two measures, and the G Augmented scale is shown in the next two measures.

g minor

Musical notation for g minor and g diminished scales. The g minor scale is shown in the first two measures, and the g diminished scale is shown in the next two measures.



Bb Major

Bb Augmented

This block contains two musical staves. The first staff is labeled 'Bb Major' and shows a scale starting on Bb, moving up stepwise through B, C, D, Eb, E, F, G, Ab, A, Bb. The second staff is labeled 'Bb Augmented' and shows a scale starting on Bb, moving up stepwise through B, C, D, Eb, E, F, G, Ab, A, Bb, with a sharp sign above the final Bb note.

bb minor

bb diminished

This block contains two musical staves. The first staff is labeled 'bb minor' and shows a scale starting on Bb, moving up stepwise through B, C, D, Eb, E, F, G, Ab, A, Bb. The second staff is labeled 'bb diminished' and shows a scale starting on Bb, moving up stepwise through B, C, D, Eb, E, F, G, Ab, A, Bb, with a flat sign above the final Bb note.

B Major

B Augmented

(G#)

This block contains two musical staves. The first staff is labeled 'B Major' and shows a scale starting on B, moving up stepwise through C, D, E, F#, G, A, B. The second staff is labeled 'B Augmented' and shows a scale starting on B, moving up stepwise through C, D, E, F#, G, A, B, with a double sharp sign above the final B note. Below the second staff, the text '(G#)' is written.

b minor

b diminished

This block contains two musical staves. The first staff is labeled 'b minor' and shows a scale starting on B, moving up stepwise through C, D, E, F#, G, A, B. The second staff is labeled 'b diminished' and shows a scale starting on B, moving up stepwise through C, D, E, F#, G, A, B, with a flat sign above the final B note.