

Seventh Chords

Broken Arpeggios Full Range

Steph Dressler

B^{M7}



B⁷



b^{m7}

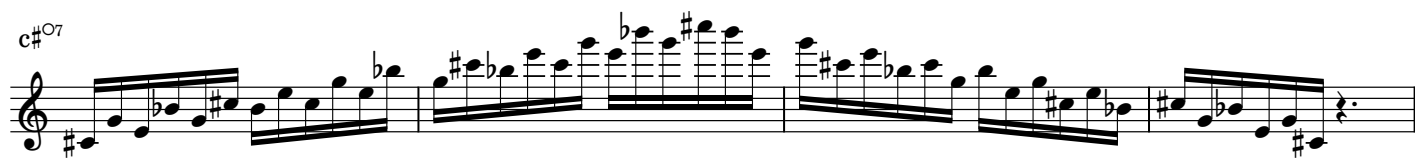
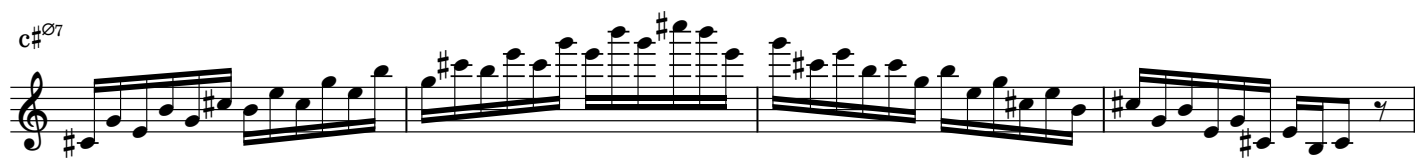
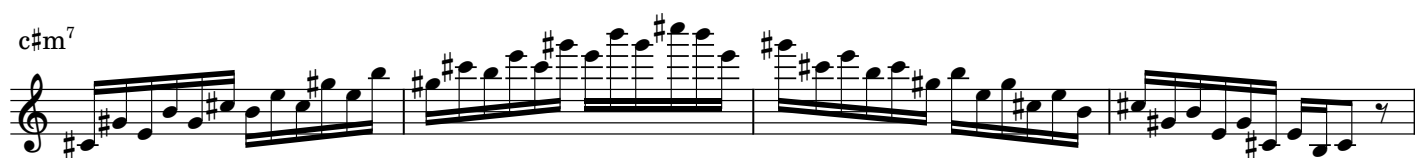
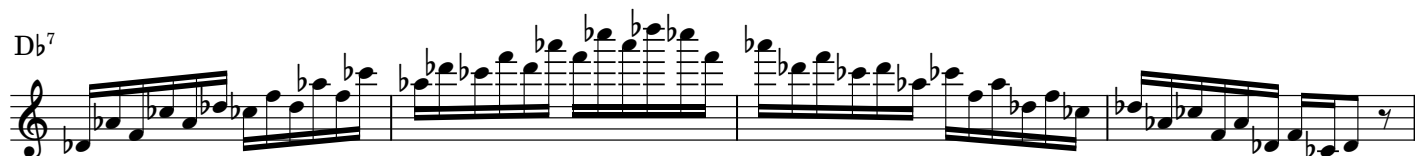
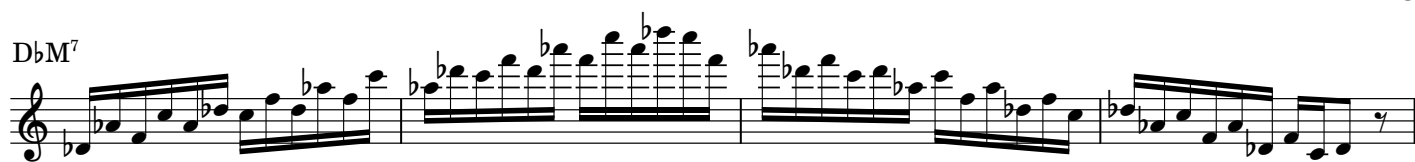


b^{ø7}



b^{o7}





4

DM⁷

A musical staff in treble clef showing a four-measure progression for the DM7 chord. The notes are: Measure 1: D4, E4, F#4, G4, A4, B4, C5; Measure 2: D4, E4, F#4, G4, A4, B4, C5; Measure 3: D4, E4, F#4, G4, A4, B4, C5; Measure 4: D4, E4, F#4, G4, A4, B4, C5. The notes are beamed in groups of four.

D⁷

A musical staff in treble clef showing a four-measure progression for the D7 chord. The notes are: Measure 1: D4, E4, F#4, G4, A4, B4, C5; Measure 2: D4, E4, F#4, G4, A4, B4, C5; Measure 3: D4, E4, F#4, G4, A4, B4, C5; Measure 4: D4, E4, F#4, G4, A4, B4, C5. The notes are beamed in groups of four.

dm⁷

A musical staff in treble clef showing a four-measure progression for the dm7 chord. The notes are: Measure 1: D4, E4, F4, G4, A4, B4, C5; Measure 2: D4, E4, F4, G4, A4, B4, C5; Measure 3: D4, E4, F4, G4, A4, B4, C5; Measure 4: D4, E4, F4, G4, A4, B4, C5. The notes are beamed in groups of four.

d^{ø7}

A musical staff in treble clef showing a four-measure progression for the dø7 chord. The notes are: Measure 1: D4, E4, F4, G4, A4, B4, C5; Measure 2: D4, E4, F4, G4, A4, B4, C5; Measure 3: D4, E4, F4, G4, A4, B4, C5; Measure 4: D4, E4, F4, G4, A4, B4, C5. The notes are beamed in groups of four.

d^{ø7}

A musical staff in treble clef showing a four-measure progression for the dø7 chord. The notes are: Measure 1: D4, E4, F4, G4, A4, B4, C5; Measure 2: D4, E4, F4, G4, A4, B4, C5; Measure 3: D4, E4, F4, G4, A4, B4, C5; Measure 4: D4, E4, F4, G4, A4, B4, C5. The notes are beamed in groups of four.

6

EM⁷



E⁷



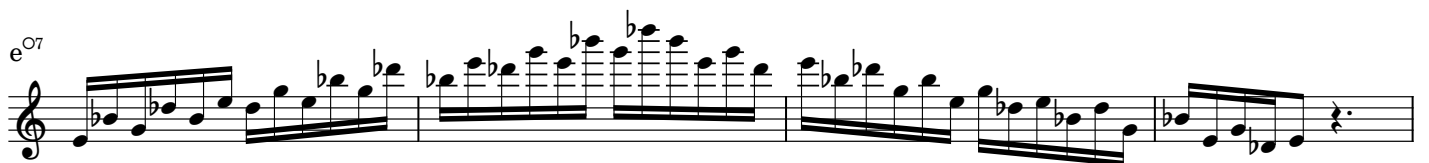
em⁷



e^{ø7}



e^{ø7}



F#M⁷

AM⁷

A musical staff in treble clef showing a sequence of chords and melodic lines. The progression starts with an Am7 chord, followed by a series of ascending and descending eighth-note runs. The final measure shows a resolution to a whole note chord.

A⁷

A musical staff in treble clef showing a sequence of chords and melodic lines. The progression starts with an A7 chord, followed by a series of ascending and descending eighth-note runs. The final measure shows a resolution to a whole note chord.

am⁷

A musical staff in treble clef showing a sequence of chords and melodic lines. The progression starts with an am7 chord, followed by a series of ascending and descending eighth-note runs. The final measure shows a resolution to a whole note chord.

a^{ø7}

A musical staff in treble clef showing a sequence of chords and melodic lines. The progression starts with an aø7 chord, followed by a series of ascending and descending eighth-note runs. The final measure shows a resolution to a whole note chord.

a^{ø7}

A musical staff in treble clef showing a sequence of chords and melodic lines. The progression starts with an aø7 chord, followed by a series of ascending and descending eighth-note runs. The final measure shows a resolution to a whole note chord.

