

# All Arpeggios

## Full Range Triplets

Steph Dressler

C Augmented

Musical notation for C Augmented triad arpeggios. The piece consists of four measures of music on a single treble clef staff. Each measure contains a triplet of eighth notes. The first measure starts with a C4 quarter note, followed by a triplet of E4, G#4, and B4 eighth notes. The second measure starts with a D4 quarter note, followed by a triplet of F#4, A4, and B4 eighth notes. The third measure starts with an E4 quarter note, followed by a triplet of G4, A4, and B4 eighth notes. The fourth measure starts with a F#4 quarter note, followed by a triplet of A4, B4, and C5 eighth notes. The piece concludes with a final triplet of G4, A4, and B4 eighth notes.

C Major

Musical notation for C Major triad arpeggios. The piece consists of four measures of music on a single treble clef staff. Each measure contains a triplet of eighth notes. The first measure starts with a C4 quarter note, followed by a triplet of E4, G4, and B4 eighth notes. The second measure starts with a D4 quarter note, followed by a triplet of F4, A4, and B4 eighth notes. The third measure starts with an E4 quarter note, followed by a triplet of G4, A4, and B4 eighth notes. The fourth measure starts with a F4 quarter note, followed by a triplet of A4, B4, and C5 eighth notes. The piece concludes with a final triplet of G4, A4, and B4 eighth notes.

c minor

Musical notation for c minor triad arpeggios. The piece consists of four measures of music on a single treble clef staff. Each measure contains a triplet of eighth notes. The first measure starts with a C4 quarter note, followed by a triplet of E4, G4, and Bb4 eighth notes. The second measure starts with a D4 quarter note, followed by a triplet of F4, Ab4, and Bb4 eighth notes. The third measure starts with an E4 quarter note, followed by a triplet of G4, Ab4, and Bb4 eighth notes. The fourth measure starts with a F4 quarter note, followed by a triplet of Ab4, Bb4, and C5 eighth notes. The piece concludes with a final triplet of G4, Ab4, and Bb4 eighth notes.

c diminished

Musical notation for c diminished triad arpeggios. The piece consists of four measures of music on a single treble clef staff. Each measure contains a triplet of eighth notes. The first measure starts with a C4 quarter note, followed by a triplet of Eb4, Fb4, and Ab4 eighth notes. The second measure starts with a D4 quarter note, followed by a triplet of Fb4, Ab4, and Bb4 eighth notes. The third measure starts with an E4 quarter note, followed by a triplet of Gb4, Ab4, and Bb4 eighth notes. The fourth measure starts with a F4 quarter note, followed by a triplet of Ab4, Bb4, and C5 eighth notes. The piece concludes with a final triplet of Gb4, Ab4, and Bb4 eighth notes.

Db Augmented

Musical notation for the Db Augmented scale in treble clef. The scale is written across four measures. The first measure contains the notes D-flat, E-flat, F, G, A-flat, B-flat, and C. The second measure contains D-flat, E-flat, F, G, A-flat, B-flat, and C. The third measure contains D-flat, E-flat, F, G, A-flat, B-flat, and C. The fourth measure contains D-flat, E-flat, F, G, A-flat, B-flat, and C. The notes are grouped into triplets, with a '3' above each group. The key signature has two flats (B-flat and E-flat).

Db Major

Musical notation for the Db Major scale in treble clef. The scale is written across four measures. The first measure contains the notes D-flat, E-flat, F, G, A-flat, B-flat, and C. The second measure contains D-flat, E-flat, F, G, A-flat, B-flat, and C. The third measure contains D-flat, E-flat, F, G, A-flat, B-flat, and C. The fourth measure contains D-flat, E-flat, F, G, A-flat, B-flat, and C. The notes are grouped into triplets, with a '3' above each group. The key signature has two flats (B-flat and E-flat).

c# minor

Musical notation for the c# minor scale in treble clef. The scale is written across four measures. The first measure contains the notes C-sharp, D-sharp, E, F-sharp, G-sharp, A, and B. The second measure contains C-sharp, D-sharp, E, F-sharp, G-sharp, A, and B. The third measure contains C-sharp, D-sharp, E, F-sharp, G-sharp, A, and B. The fourth measure contains C-sharp, D-sharp, E, F-sharp, G-sharp, A, and B. The notes are grouped into triplets, with a '3' above each group. The key signature has three sharps (F-sharp, C-sharp, and G-sharp).

c# diminished

Musical notation for the c# diminished scale in treble clef. The scale is written across four measures. The first measure contains the notes C-sharp, D-sharp, E, F-sharp, G-sharp, A, and B. The second measure contains C-sharp, D-sharp, E, F-sharp, G-sharp, A, and B. The third measure contains C-sharp, D-sharp, E, F-sharp, G-sharp, A, and B. The fourth measure contains C-sharp, D-sharp, E, F-sharp, G-sharp, A, and B. The notes are grouped into triplets, with a '3' above each group. The key signature has three sharps (F-sharp, C-sharp, and G-sharp).

D Augmented

Musical notation for the D Augmented scale, consisting of 10 measures. The notes are D, E, F#, G, A, B, C#, D, E, F#, G, A, B, C#, D. The scale is written on a treble clef staff with a key signature of two sharps (F# and C#). The notes are grouped into triplets, with a '3' above each group. The first measure contains four triplets, and the subsequent measures contain three triplets each.

D Major

Musical notation for the D Major scale, consisting of 10 measures. The notes are D, E, F#, G, A, B, C, D, E, F#, G, A, B, C, D. The scale is written on a treble clef staff with a key signature of two sharps (F# and C#). The notes are grouped into triplets, with a '3' above each group. The first measure contains four triplets, and the subsequent measures contain three triplets each.

d minor

Musical notation for the d minor scale, consisting of 10 measures. The notes are D, E, F, G, A, Bb, C, D, E, F, G, A, Bb, C, D. The scale is written on a treble clef staff with a key signature of one flat (Bb). The notes are grouped into triplets, with a '3' above each group. The first measure contains four triplets, and the subsequent measures contain three triplets each.

d diminished

Musical notation for the d diminished scale, consisting of 10 measures. The notes are D, Eb, F, G, Ab, Bb, C, D, Eb, F, G, Ab, Bb, C, D. The scale is written on a treble clef staff with a key signature of two flats (Eb and Bb). The notes are grouped into triplets, with a '3' above each group. The first measure contains four triplets, and the subsequent measures contain three triplets each.

E $\flat$  Augmented

Musical notation for the E $\flat$  Augmented scale. The scale is written on a single treble clef staff. It begins with a key signature of one flat (B $\flat$ ). The notes are: E $\flat$ , F, G, A $\flat$ , B $\flat$ , C, D, E $\flat$ , F, G, A $\flat$ , B $\flat$ , C, D, E $\flat$ . The notation includes triplets and slurs over the notes, indicating a specific fingering or articulation.

E $\flat$  Major

Musical notation for the E $\flat$  Major scale. The scale is written on a single treble clef staff. It begins with a key signature of one flat (B $\flat$ ). The notes are: E $\flat$ , F, G, A $\flat$ , B $\flat$ , C, D, E $\flat$ , F, G, A $\flat$ , B $\flat$ , C, D, E $\flat$ . The notation includes triplets and slurs over the notes, indicating a specific fingering or articulation.

e $\flat$  minor

Musical notation for the e $\flat$  minor scale. The scale is written on a single treble clef staff. It begins with a key signature of two flats (B $\flat$ , E $\flat$ ). The notes are: E $\flat$ , F, G, A $\flat$ , B $\flat$ , C, D, E $\flat$ , F, G, A $\flat$ , B $\flat$ , C, D, E $\flat$ . The notation includes triplets and slurs over the notes, indicating a specific fingering or articulation.

e $\flat$  diminished

Musical notation for the e $\flat$  diminished scale. The scale is written on a single treble clef staff. It begins with a key signature of two flats (B $\flat$ , E $\flat$ ). The notes are: E $\flat$ , F, G, A $\flat$ , B $\flat$ , C, D, E $\flat$ , F, G, A $\flat$ , B $\flat$ , C, D, E $\flat$ . The notation includes triplets and slurs over the notes, indicating a specific fingering or articulation.

E Augmented

Musical notation for the E Augmented scale. The scale is written on a single treble clef staff. It consists of 14 notes: E, F#, G#, A, B, C, D, E, F#, G#, A, B, C, D. The notes are grouped into four measures of four notes each. Each measure contains a triplet of three notes followed by a single note. The triplet notes are beamed together, and the number '3' is written above and below the triplet. The notes are: Measure 1: E, F#, G#; Measure 2: A, B, C; Measure 3: D, E, F#; Measure 4: G#, A, B. The final note of each measure is a quarter note. The key signature has two sharps (F# and C#).

E Major

Musical notation for the E Major scale. The scale is written on a single treble clef staff. It consists of 14 notes: E, F#, G, A, B, C, D, E, F#, G, A, B, C, D. The notes are grouped into four measures of four notes each. Each measure contains a triplet of three notes followed by a single note. The triplet notes are beamed together, and the number '3' is written above and below the triplet. The notes are: Measure 1: E, F#, G; Measure 2: A, B, C; Measure 3: D, E, F#; Measure 4: G, A, B. The final note of each measure is a quarter note. The key signature has two sharps (F# and C#).

e minor

Musical notation for the e minor scale. The scale is written on a single treble clef staff. It consists of 14 notes: E, F, G, A, B, C, D, E, F, G, A, B, C, D. The notes are grouped into four measures of four notes each. Each measure contains a triplet of three notes followed by a single note. The triplet notes are beamed together, and the number '3' is written above and below the triplet. The notes are: Measure 1: E, F, G; Measure 2: A, B, C; Measure 3: D, E, F; Measure 4: G, A, B. The final note of each measure is a quarter note. The key signature has no sharps or flats.

e diminished

Musical notation for the e diminished scale. The scale is written on a single treble clef staff. It consists of 14 notes: E, F, Gb, Ab, Bb, C, Db, E, F, Gb, Ab, Bb, C. The notes are grouped into four measures of four notes each. Each measure contains a triplet of three notes followed by a single note. The triplet notes are beamed together, and the number '3' is written above and below the triplet. The notes are: Measure 1: E, F, Gb; Measure 2: Ab, Bb, C; Measure 3: Db, E, F; Measure 4: Gb, Ab, Bb. The final note of each measure is a quarter note. The key signature has two flats (Bb and Eb).

F Augmented

Musical notation for the F Augmented scale. The scale is written on a treble clef staff with a key signature of one sharp (F#). The notes are: F, G, A, B, C, D, E, F#. The scale is presented in two directions: ascending and descending. Each note is marked with a triplet '3' above it. The piece concludes with a quarter rest.

F Major

Musical notation for the F Major scale. The scale is written on a treble clef staff with a key signature of one flat (Bb). The notes are: F, G, A, Bb, C, D, E, F. The scale is presented in two directions: ascending and descending. Each note is marked with a triplet '3' above it. The piece concludes with a quarter rest.

f minor

Musical notation for the f minor scale. The scale is written on a treble clef staff with a key signature of two flats (Bb, Eb). The notes are: F, G, Ab, Bb, C, D, Eb, F. The scale is presented in two directions: ascending and descending. Each note is marked with a triplet '3' above it. The piece concludes with a quarter rest.

f diminished

Musical notation for the f diminished scale. The scale is written on a treble clef staff with a key signature of two flats (Bb, Eb). The notes are: F, Gb, Ab, Bb, C, Db, Eb, F. The scale is presented in two directions: ascending and descending. Each note is marked with a triplet '3' above it. The piece concludes with a quarter rest.

G $\flat$  Augmented

Musical notation for the G $\flat$  Augmented scale. The scale is written on a single treble clef staff. It begins with a key signature of two flats (B $\flat$  and E $\flat$ ). The notes are: G $\flat$ , A $\flat$ , B $\flat$ , C $\flat$ , D $\flat$ , E $\flat$ , F $\flat$ , G $\flat$ , A $\flat$ , B $\flat$ , C $\flat$ , D $\flat$ , E $\flat$ , F $\flat$ , G $\flat$ . The notation includes numerous triplet markings (the number '3' below the notes) and various accidentals (flats) throughout the scale.

F $\sharp$  Major

Musical notation for the F $\sharp$  Major scale. The scale is written on a single treble clef staff. It begins with a key signature of two sharps (F $\sharp$  and C $\sharp$ ). The notes are: F $\sharp$ , G $\sharp$ , A $\sharp$ , B $\sharp$ , C $\sharp$ , D $\sharp$ , E $\sharp$ , F $\sharp$ , G $\sharp$ , A $\sharp$ , B $\sharp$ , C $\sharp$ , D $\sharp$ , E $\sharp$ , F $\sharp$ . The notation includes numerous triplet markings (the number '3' below the notes) and various accidentals (sharps) throughout the scale.

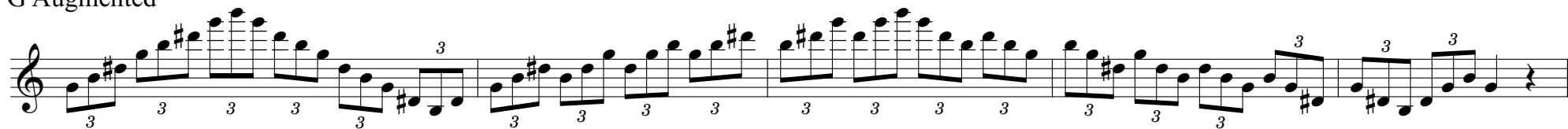
f $\sharp$  minor

Musical notation for the f $\sharp$  minor scale. The scale is written on a single treble clef staff. It begins with a key signature of two sharps (F $\sharp$  and C $\sharp$ ). The notes are: F $\sharp$ , G $\sharp$ , A $\sharp$ , B $\sharp$ , C $\sharp$ , D $\sharp$ , E $\sharp$ , F $\sharp$ , G $\sharp$ , A $\sharp$ , B $\sharp$ , C $\sharp$ , D $\sharp$ , E $\sharp$ , F $\sharp$ . The notation includes numerous triplet markings (the number '3' below the notes) and various accidentals (sharps) throughout the scale.

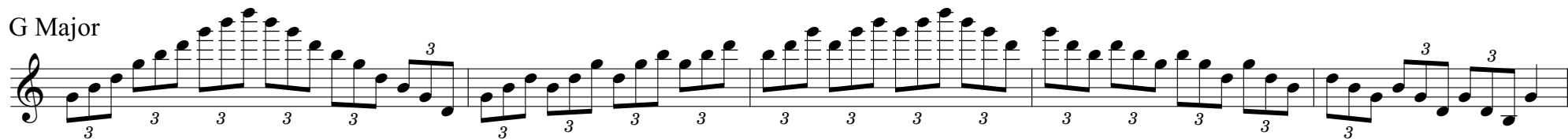
f $\sharp$  diminished

Musical notation for the f $\sharp$  diminished scale. The scale is written on a single treble clef staff. It begins with a key signature of two sharps (F $\sharp$  and C $\sharp$ ). The notes are: F $\sharp$ , G $\sharp$ , A $\sharp$ , B $\sharp$ , C $\sharp$ , D $\sharp$ , E $\sharp$ , F $\sharp$ , G $\sharp$ , A $\sharp$ , B $\sharp$ , C $\sharp$ , D $\sharp$ , E $\sharp$ , F $\sharp$ . The notation includes numerous triplet markings (the number '3' below the notes) and various accidentals (sharps) throughout the scale.

## G Augmented



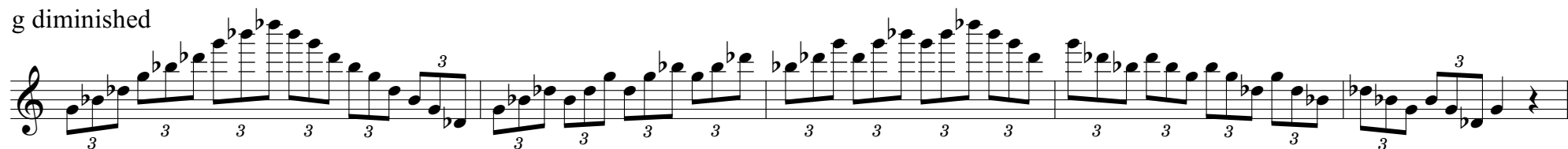
## G Major



## g minor



## g diminished





A $\flat$  Augmented

Musical notation for the A $\flat$  Augmented scale. The scale is written on a single staff in treble clef with a key signature of two flats (B $\flat$  and E $\flat$ ). The notes are A $\flat$ , B $\flat$ , C, D, E $\flat$ , F, G, A $\flat$ , B $\flat$ , C, D, E $\flat$ , F, G, A $\flat$ . The notation includes various triplet markings (indicated by a '3' above the notes) and accidentals (flats) for the appropriate notes.

A $\flat$  Major

Musical notation for the A $\flat$  Major scale. The scale is written on a single staff in treble clef with a key signature of two flats (B $\flat$  and E $\flat$ ). The notes are A $\flat$ , B $\flat$ , C, D, E $\flat$ , F, G, A $\flat$ , B $\flat$ , C, D, E $\flat$ , F, G, A $\flat$ . The notation includes various triplet markings (indicated by a '3' above the notes) and accidentals (flats) for the appropriate notes.

a $\flat$  minor

Musical notation for the a $\flat$  minor scale. The scale is written on a single staff in treble clef with a key signature of three flats (B $\flat$ , E $\flat$ , and A $\flat$ ). The notes are A $\flat$ , B $\flat$ , C, D, E $\flat$ , F, G, A $\flat$ , B $\flat$ , C, D, E $\flat$ , F, G, A $\flat$ . The notation includes various triplet markings (indicated by a '3' above the notes) and accidentals (flats) for the appropriate notes.

g $\sharp$  diminished

Musical notation for the g $\sharp$  diminished scale. The scale is written on a single staff in treble clef with a key signature of one sharp (F $\sharp$ ). The notes are G $\sharp$ , A, B $\flat$ , C, D, E $\flat$ , F, G $\sharp$ , A, B $\flat$ , C, D, E $\flat$ , F, G $\sharp$ . The notation includes various triplet markings (indicated by a '3' above the notes) and accidentals (sharps and flats) for the appropriate notes.

A Augmented

Musical notation for the A Augmented scale. The scale is written on a single treble clef staff. It consists of 11 notes: A, B, C#, D, E, F#, G, A, B, C#, D. The notes are grouped into triplets: (A, B, C#), (D, E, F#), (G, A, B), (C#, D, A), (B, C#, D), (E, F#, G), (A, B, C#), (D, E, F#), (G, A, B), (C#, D, A), and (B, C#, D). The final note is a whole note.

A Major

Musical notation for the A Major scale. The scale is written on a single treble clef staff. It consists of 11 notes: A, B, C#, D, E, F#, G, A, B, C#, D. The notes are grouped into triplets: (A, B, C#), (D, E, F#), (G, A, B), (C#, D, A), (B, C#, D), (E, F#, G), (A, B, C#), (D, E, F#), (G, A, B), (C#, D, A), and (B, C#, D). The final note is a whole note.

a minor

Musical notation for the a minor scale. The scale is written on a single treble clef staff. It consists of 11 notes: A, B, C, D, E, F, G, A, B, C, D. The notes are grouped into triplets: (A, B, C), (D, E, F), (G, A, B), (C, D, A), (B, C, D), (E, F, G), (A, B, C), (D, E, F), (G, A, B), (C, D, A), and (B, C, D). The final note is a whole note.

a diminished

Musical notation for the a diminished scale. The scale is written on a single treble clef staff. It consists of 11 notes: A, Bb, C, D, Eb, F, G, A, Bb, C, D. The notes are grouped into triplets: (A, Bb, C), (D, Eb, F), (G, A, Bb), (C, D, A), (Bb, C, D), (E, F, G), (A, Bb, C), (D, Eb, F), (G, A, Bb), (C, D, A), and (Bb, C, D). The final note is a whole note.

B $\flat$  Augmented

Musical notation for the B $\flat$  Augmented scale. The scale is written on a single treble clef staff. It begins with a key signature of one flat (B $\flat$ ) and contains two sharps (F $\sharp$  and C $\sharp$ ). The scale is composed of 12 notes: B $\flat$ , C, D, E, F $\sharp$ , G, A, B, C $\sharp$ , D, E, F $\flat$ . The notation includes various triplet markings (indicated by a '3' below the notes) and accidentals (sharps and flats) throughout the scale.

B $\flat$  Major

Musical notation for the B $\flat$  Major scale. The scale is written on a single treble clef staff. It begins with a key signature of one flat (B $\flat$ ) and contains no sharps or flats. The scale is composed of 12 notes: B $\flat$ , C, D, E, F, G, A, B, C, D, E, F. The notation includes various triplet markings (indicated by a '3' below the notes) and accidentals (flats) throughout the scale.

b $\flat$  minor

Musical notation for the B $\flat$  minor scale. The scale is written on a single treble clef staff. It begins with a key signature of two flats (B $\flat$  and E $\flat$ ) and contains no sharps or flats. The scale is composed of 12 notes: B $\flat$ , C, D, E $\flat$ , F, G, A, B, C, D, E $\flat$ , F. The notation includes various triplet markings (indicated by a '3' below the notes) and accidentals (flats) throughout the scale.

b $\flat$  diminished

Musical notation for the B $\flat$  diminished scale. The scale is written on a single treble clef staff. It begins with a key signature of two flats (B $\flat$  and E $\flat$ ) and contains two sharps (F $\sharp$  and C $\sharp$ ). The scale is composed of 12 notes: B $\flat$ , C, D, E $\flat$ , F $\sharp$ , G, A, B, C $\sharp$ , D, E $\flat$ , F. The notation includes various triplet markings (indicated by a '3' below the notes) and accidentals (flats and sharps) throughout the scale.

Cb Augmented

Musical notation for the Cb Augmented scale in treble clef. The scale consists of the notes: Cb, Db, Eb, Fb, Gb, Ab, Bb, Cb. The notation shows a sequence of eighth notes with triplet markings (3) above and below the notes. The key signature has two flats (Cb, Db).

B Major

Musical notation for the B Major scale in treble clef. The scale consists of the notes: B, C#, D#, E, F#, G#, A, B. The notation shows a sequence of eighth notes with triplet markings (3) above and below the notes. The key signature has two sharps (C#, F#).

b minor

Musical notation for the b minor scale in treble clef. The scale consists of the notes: Bb, C, D, Eb, F, G, Ab, Bb. The notation shows a sequence of eighth notes with triplet markings (3) above and below the notes. The key signature has two flats (Bb, Eb).

b diminished

Musical notation for the b diminished scale in treble clef. The scale consists of the notes: Bb, C, Db, Eb, F, G, Ab, Bb. The notation shows a sequence of eighth notes with triplet markings (3) above and below the notes. The key signature has two flats (Bb, Eb).